

RTC-710RK Tablet Software Uninstall/install Procedure Manual

1. Remove the micro SD card from the Tablet.
- ① Remove the micro SD card from the micro SD card slot of the Tablet.
2. Deleting the old *.apk data and copying the new one to the micro SD card.

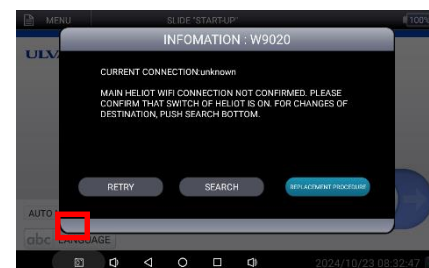
- ① Connect a card reader to the PC.
- ② Insert the micro SD card into the card reader, delete the old *.apk file, and copy the new *.apk file.



3. Uninstall the application.

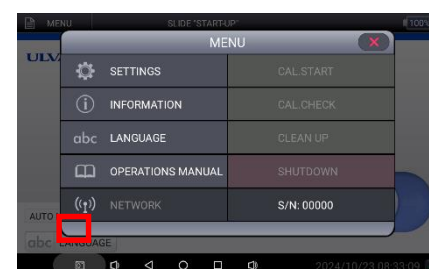
3-1. When HELIOT cannot be turned on (When there is no HELIOT).

- ① Turn on the Tablet.
- ② Since there is no communication between HELIOT and the tablet, press and hold the lower-left corner (red square) of INFORMATION: W9020 (the right picture) for more than 3 seconds.
- ③ Then, the screen will be the ANDROID screen.

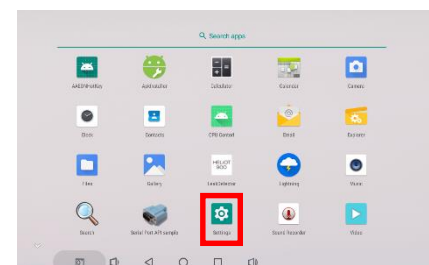
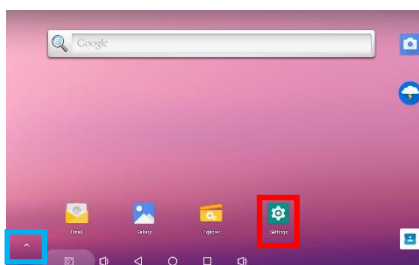


3-2. When HELIOT and Tablet can communicate.

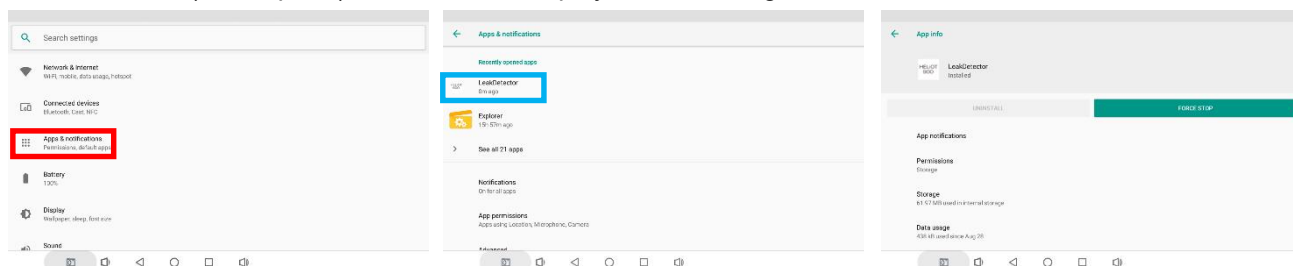
- ① Make the Tablet and HELIOT communicate.
- ② Press and hold the lower-left corner (red square) of the "MENU" screen for 3 seconds or more. Or go to "MENU" > "Settings" > "Display/Message," and press and hold [ANDROID] (blue square) for 3 seconds or more.
- ③ Then, the screen will be the ANDROID screen.



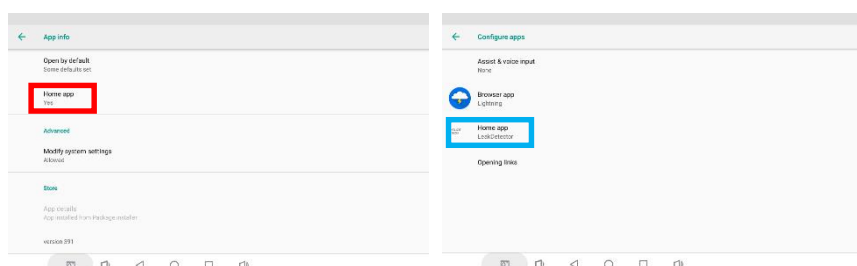
- ④ When the ANDROID HOME screen appears, select the Setting in the red square. If there is no Setting on the HOME screen, select the icon in the blue square, and then choose the setting in the screen displayed.



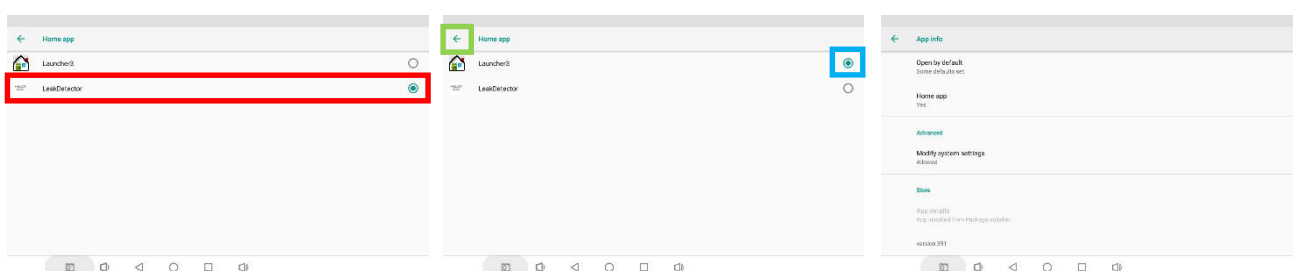
- ⑤ When you select Settings, the bottom left screen will be displayed. Select Apps & notifications (red square) in Settings. When you select it, the bottom center screen will be displayed. In the recently opened apps, you will find Leak Detector (blue square), so select it to display the bottom right screen.



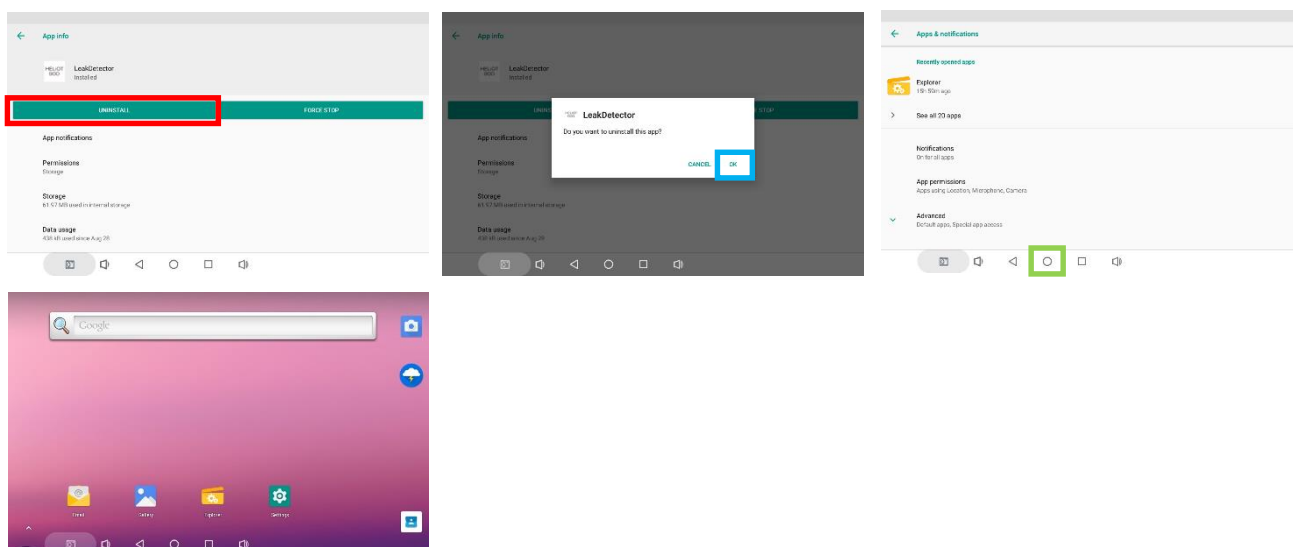
- ⑥ Scroll down the App info in Leak Detector and select Home app (red square) in the information. When you select it, the bottom center screen will be displayed. In Configure apps, there is Home app (blue square), so select it.



- ⑦ The Home app will be displayed and Leak Detector will be selected (red square). Select Launcher3 (blue square). After selecting, tap the "←" (green square) twice to return to the bottom right of the App info screen.



- ⑧ Scroll up on the app information screen, select UNINSTALL (red square), and select OK (blue square) on the pop-up [Do you want to uninstall this app?]. Once the uninstallation is complete, you will be taken to Apps & notifications, so select the circle button at the bottom center of the screen to move to the ANDROID HOME screen.



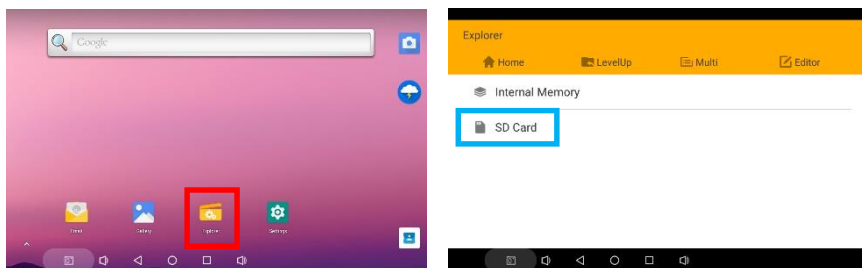
4. Insert the micro SD card into the Tablet.

① Insert the micro SD card into the micro SD card slot of the tablet until it clicks into place.

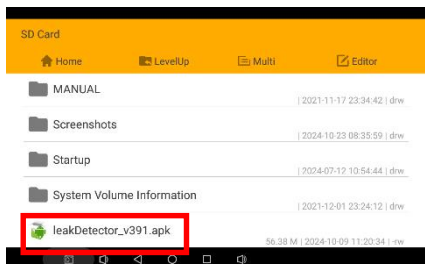


5. Install the application.

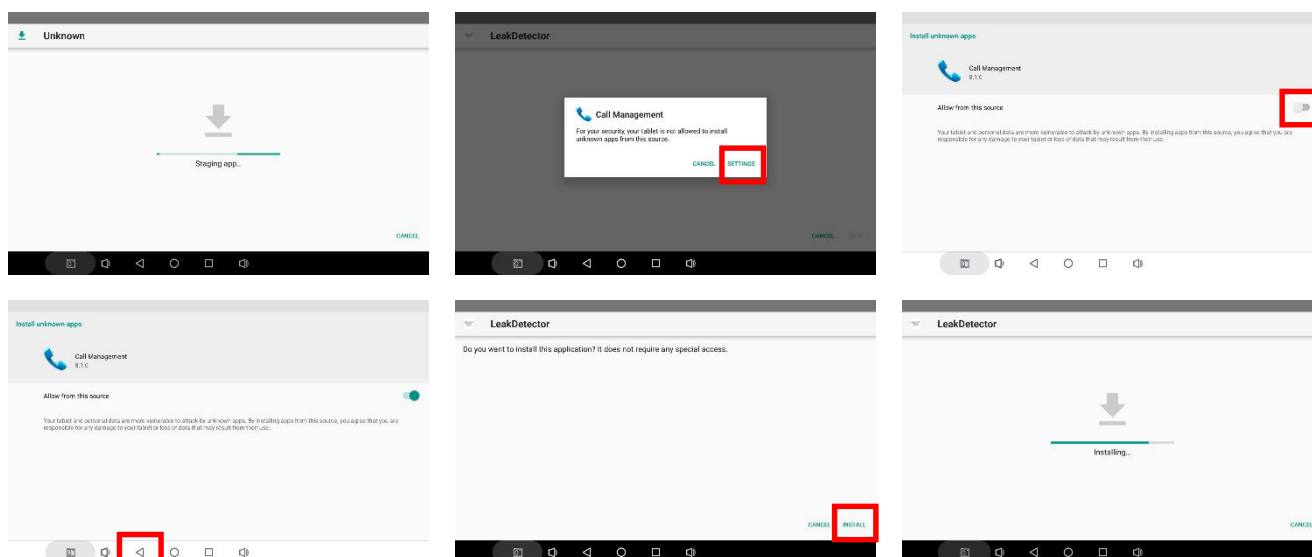
① Select "Explorer" (red square) on the ANDROID HOME screen. Then, select "SD Card" (blue square) on the Explorer screen.



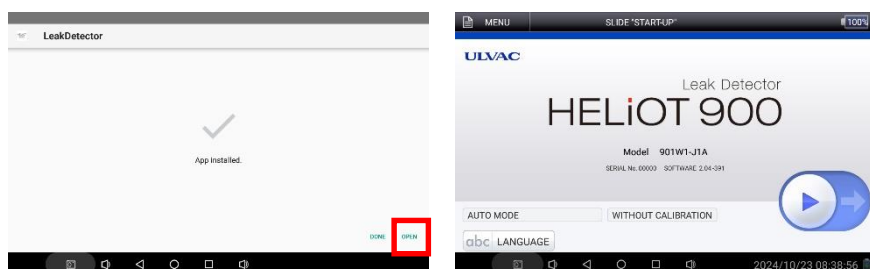
② Under "SD Card", scroll down to select "leakdetector_v***.apk" (red square).



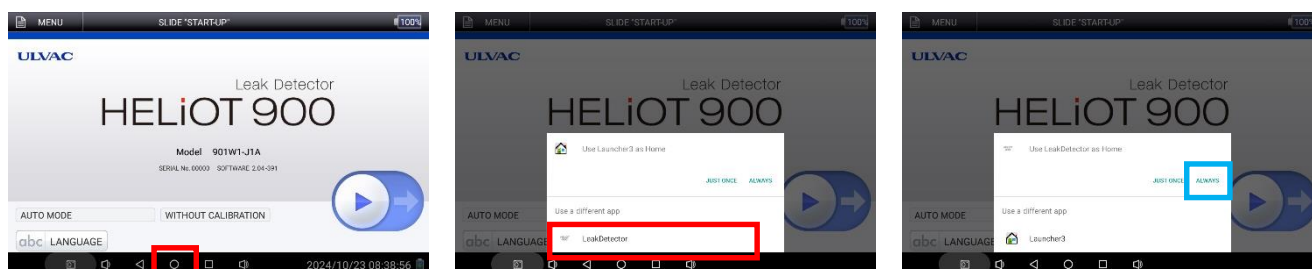
- ③ When you select "leakdetector_v***.apk", the screen will move from the bottom left to the bottom center screen, so select SETTINGS. When you select it, the bottom right of the Install unknown apps screen will be displayed, so select Allow from this source and tap the ◀ button. The HELIOT900 app installation screen will be displayed, so please install it according to the following procedure. When you select "Install", it will display "Installing".



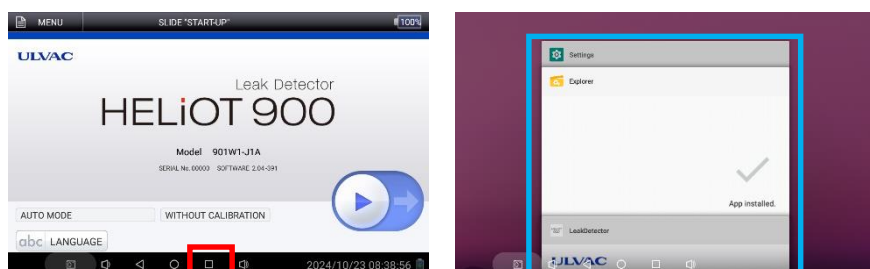
- ④ When the installation is complete, press "Open" to go to the HELIOT initial screen.



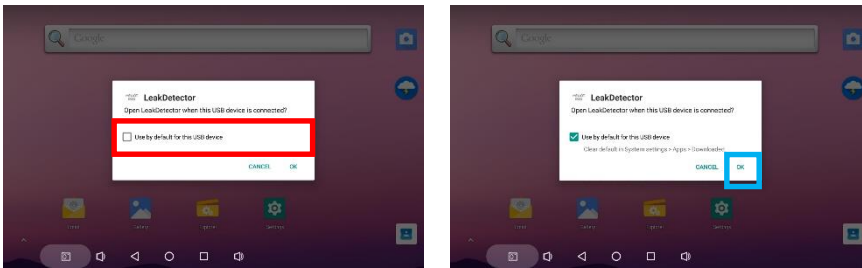
- ⑤ Select the "○" button (red square) in the middle of the left screen below. The window (the right picture below) will appear. Select "HELIO900" (red square), then choose the "○" button again and select "Always" (blue square).



- ⑥ Select the "□" button (red square) in the middle of the left screen below to move to the screen right below. Click the files in the blue square to close them all.



- ⑦ Connect the USB cable to the Tablet, the pop-up window (left picture below) will appear. When select "☒ (red square), as shown in the right picture below. Select "OK" (blue square).



This completes the installation and settings.